

Part of



University of
Nottingham
UK | CHINA | MALAYSIA

NOTTINGHAM
PLAYHOUSE

Nottingham Playhouse Theatre Company and Lakeside Arts present

A MIDSUMMER NIGHT'S DREAM

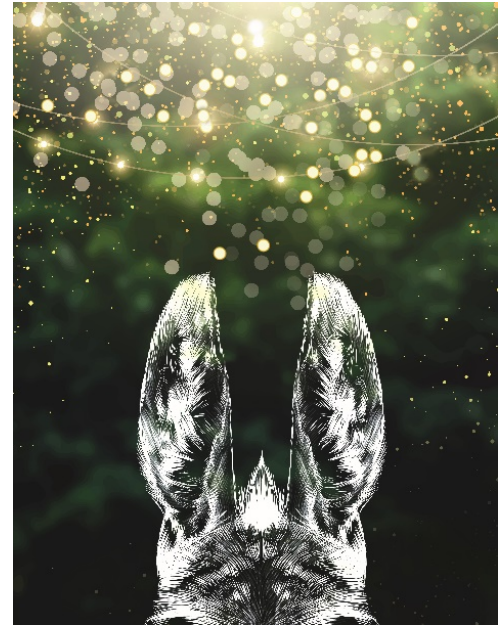
By William Shakespeare | Adapted by Martin Berry

Played by

Charlotte East	Helena, Quince, Egeus, Puck
Freya O'Flynn	Hermia, Titania, Starveling, Puck
Jacob Seelochan	Lysander, Oberon, Flute, Puck
Peter Watts	Demetrius, Bottom, Puck

Creative Team

Director	Martin Berry
Set and Costume Designer	Erin Fleming
Sound Designer	Inês Sampaio Figueiredo
Assistant Director	Natalia Bruce
Costume Supervisor	Louise Smith
Sound Programmer	Sam Osborne
Producer	Joanne Blunt
Stage Manager	Kate Bosomworth
Production Manager	Jill Robertshaw
Company Stage Manager	Patricia Davenport



Set, Props and Costume made by the Nottingham Playhouse Production Departments.

Hello and a huge warm welcome to Nottingham Lakeside Arts.

A Midsummer Night's Dream has been adapted, critiqued, painted, filmed, composed, choreographed and more since it was written over 400 years ago. It is likely Shakespeare wrote it during a time associated with his most lyrical work, having recently completed *Romeo and Juliet*, and the characters, complex plot, motifs, poetry, and themes have engaged and occupied scholars and artists ever since. Certainly, as we have explored the play in rehearsal, it continues to provide countless opportunities for discussion and fun. It does that most theatrical of things so well – making us think by making us laugh.

Our production, aimed squarely at making the play accessible and fun for all ages, has been a real joy to create – finding ways to tell the story that make a virtue of the outdoor setting and wide age range of our audience. More than anything we hope you have fun with us and that we both delight those who already love the play and convert some of those who fear theatre or Shakespeare might not be for them.

Martin Berry
Director of Participation, Nottingham Playhouse

Shona Powell OBE
Director, Lakeside Arts

We would love to hear your thoughts via @LakesideArts and @nottmplayhouse.

Acknowledgments and thanks

Tom Partridge (graphic design); Richard Statham, Christopher Flux (technical support at Lakeside); Andy Bartlett; Mária Konyeliciska, Phoebe Raine and Tim Rushby (marketing support); all the staff and teams at Lakeside Arts and Nottingham Playhouse



Nottingham
City Council



Supported using public funding by
ARTS COUNCIL
ENGLAND